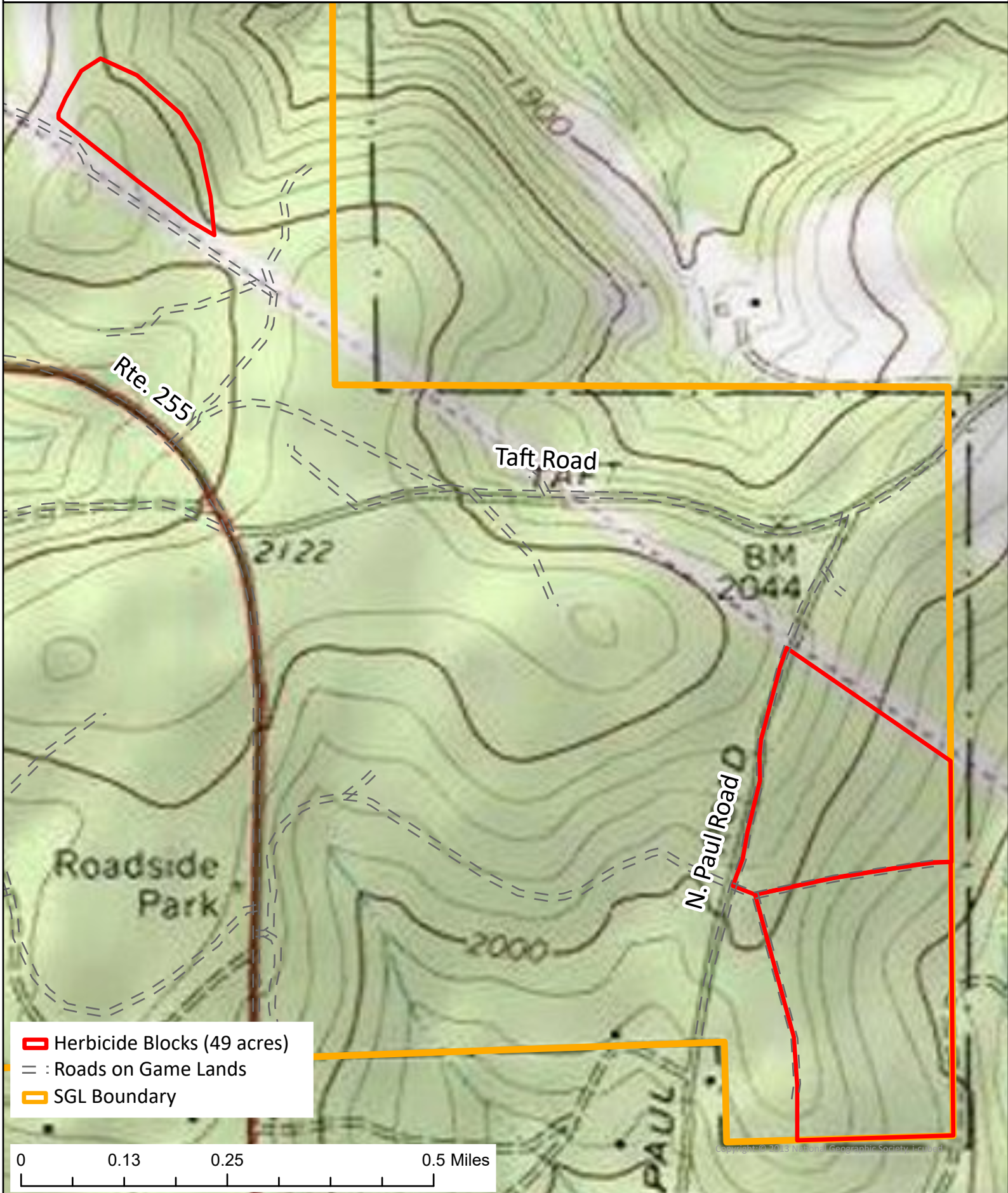







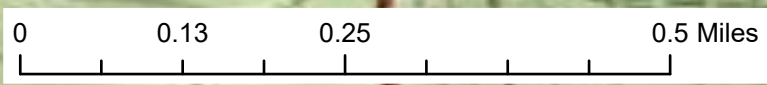
Paul Road Herbicide (Conventional)

State Game Land 025, Elk County, St. Mary's Township

42



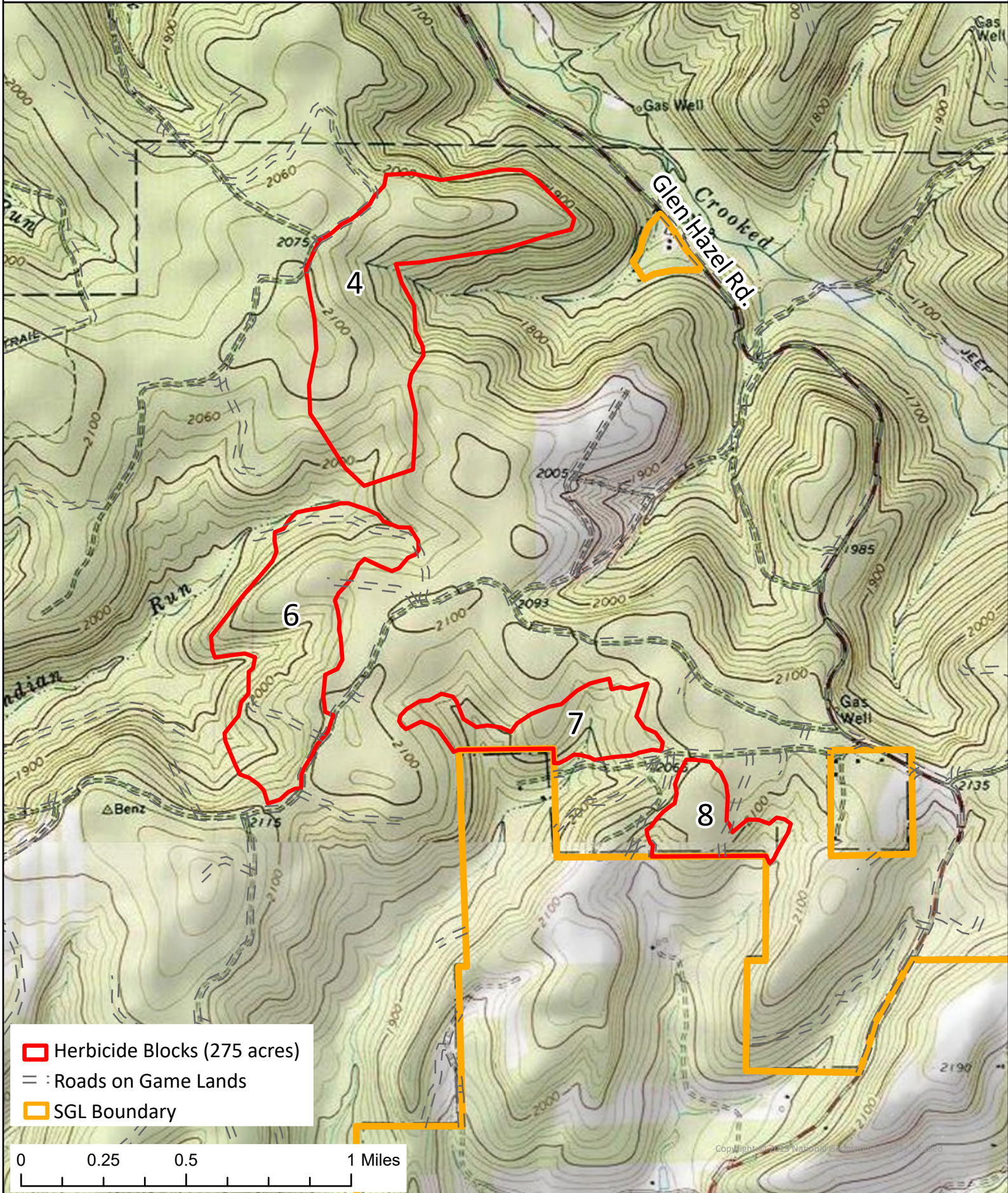
-  Herbicide Blocks (49 acres)
-  Roads on Game Lands
-  SGL Boundary





Standoff Herbicide (Machine Only)

State Game Land 025, Elk County, St. Mary's Township



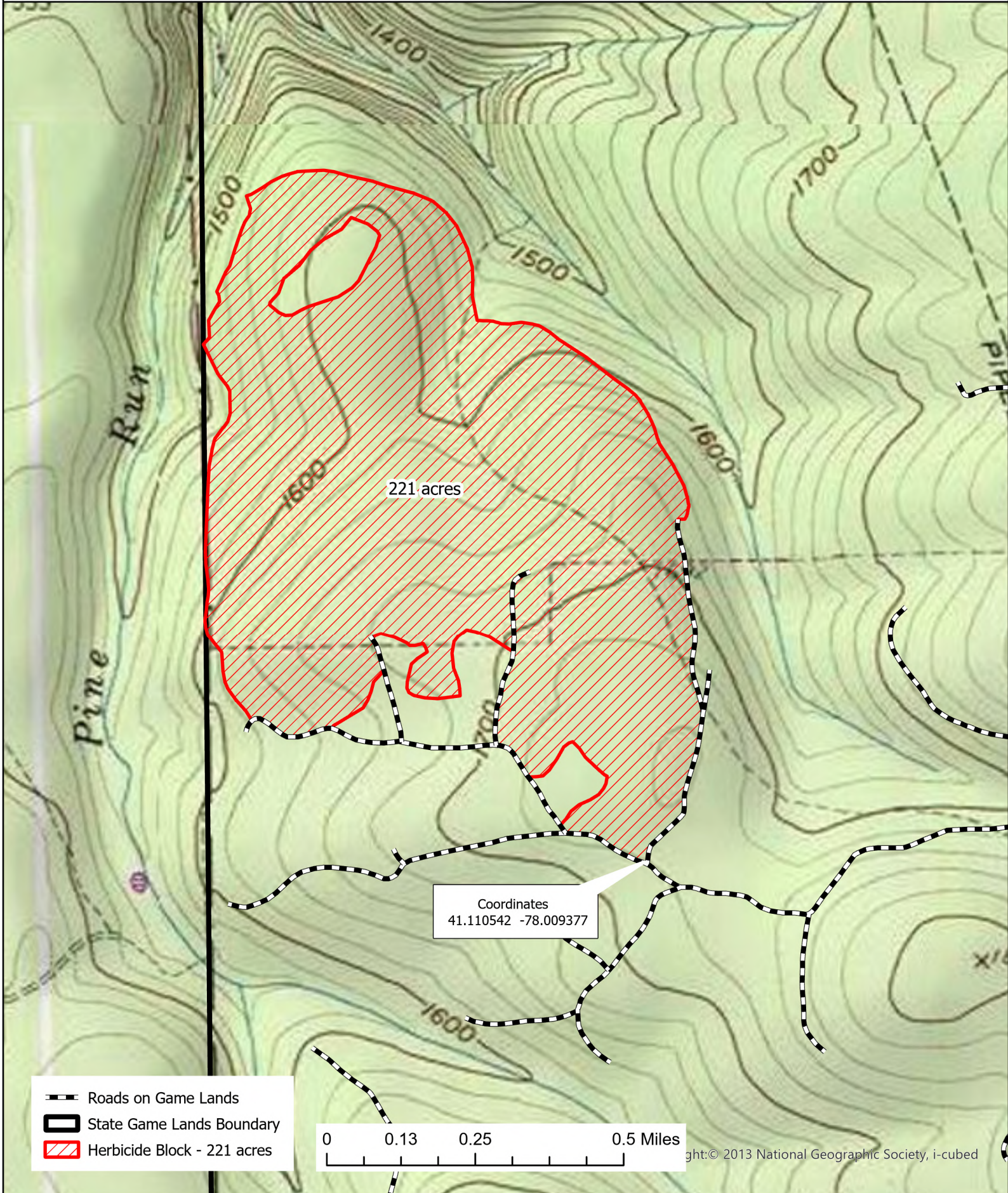
- Herbicide Blocks (275 acres)
- Roads on Game Lands
- SGL Boundary

0 0.25 0.5 1 Miles



Pine 3 Herbicide Project

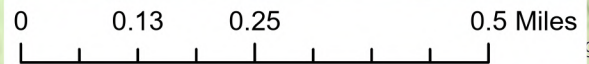
State Game Land 100, Centre County, Burnside Township



221 acres

Coordinates
41.110542 -78.009377

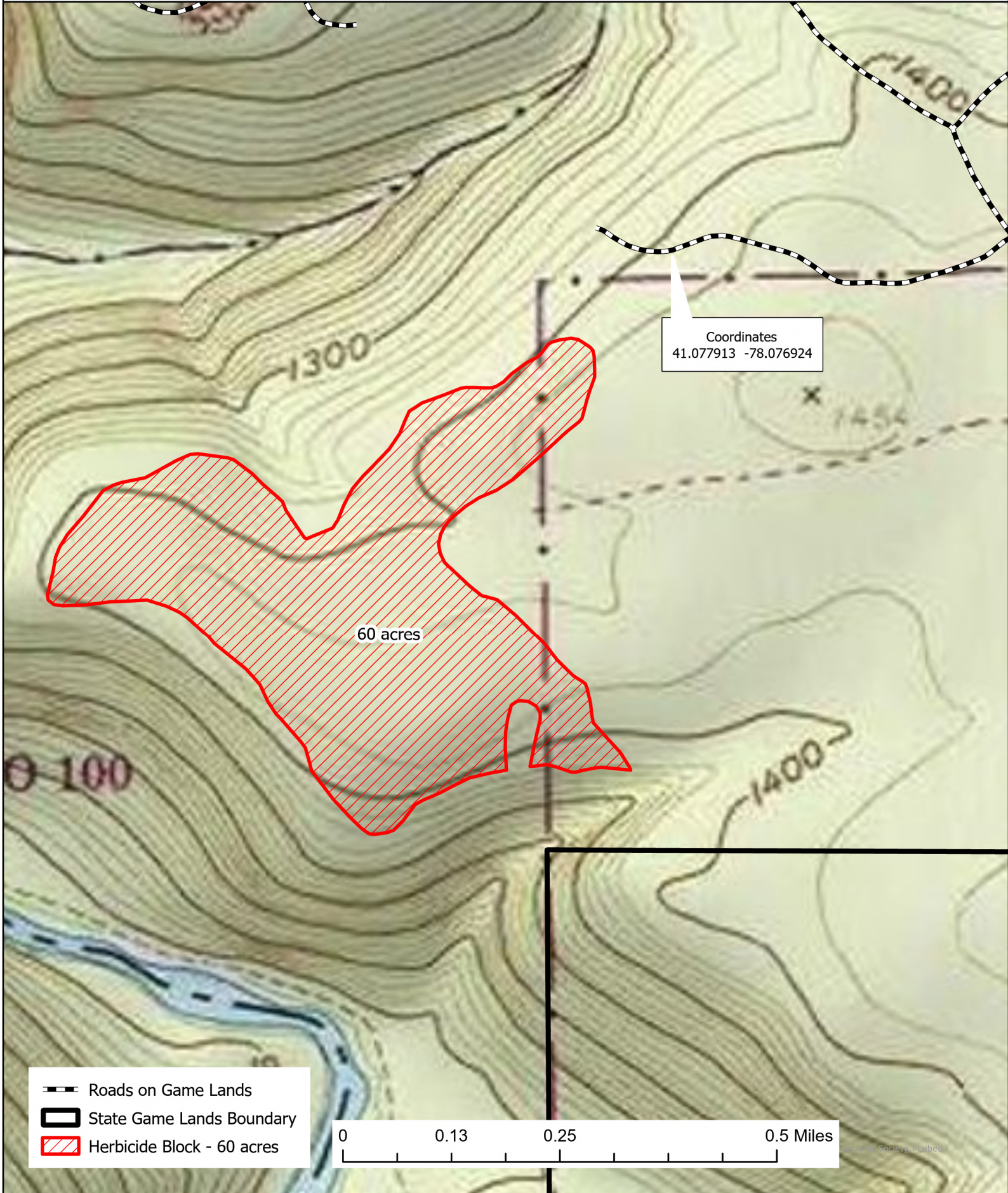
- Roads on Game Lands
- State Game Lands Boundary
- Herbicide Block - 221 acres





Redlick Run Herbicide Project

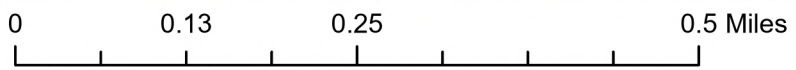
State Game Land 100, Centre County, Burnside Township



Coordinates
41.077913 -78.076924

60 acres

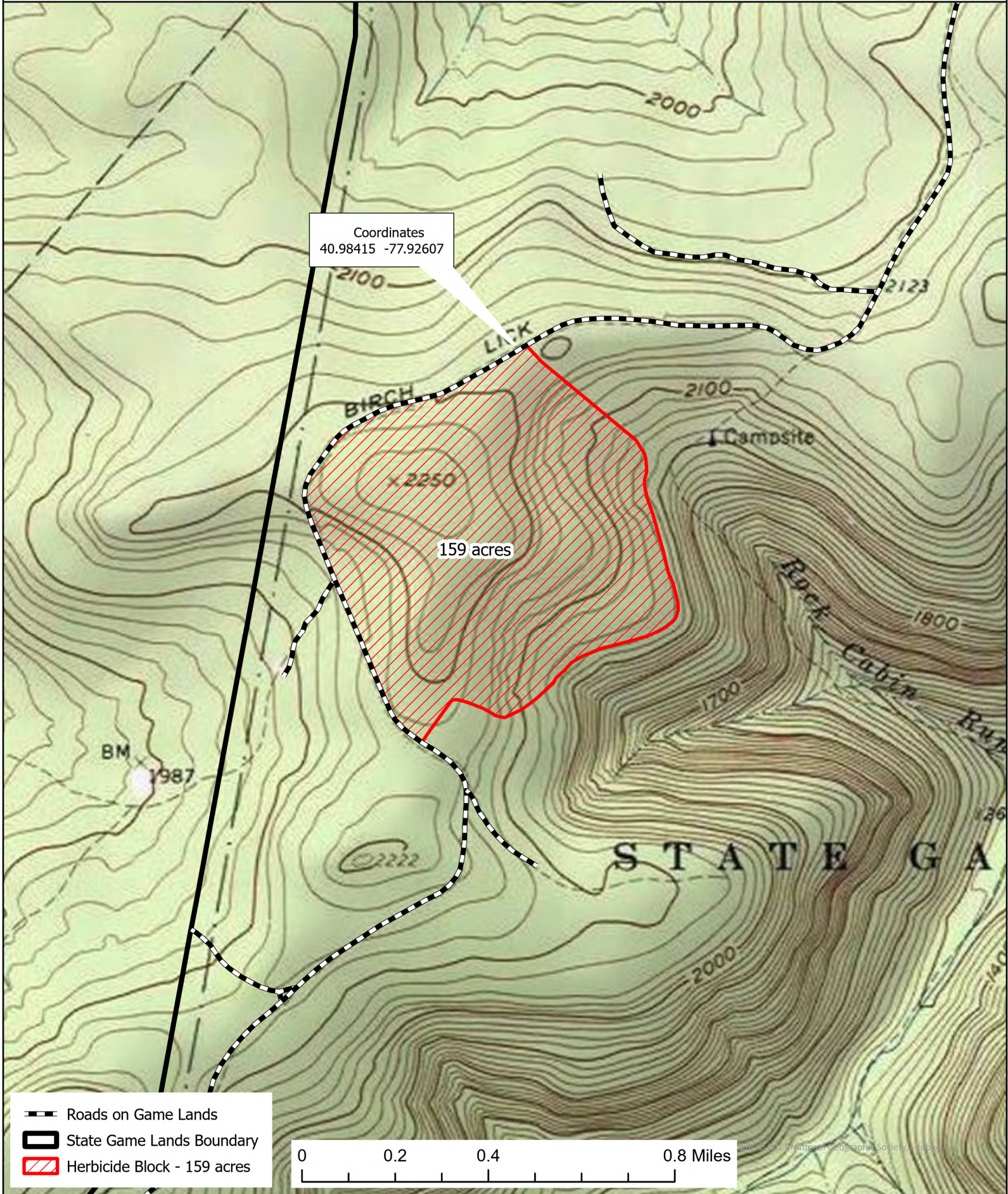
- Roads on Game Lands
- State Game Lands Boundary
- Herbicide Block - 60 acres








Rock Cabin Block 1 Herbicide Project

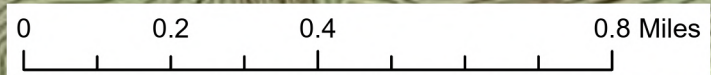
State Game Land 103, Centre County, Union Township



Coordinates
40.98415 -77.92607

159 acres

-  Roads on Game Lands
-  State Game Lands Boundary
-  Herbicide Block - 159 acres



Map © 2013 National Geographic Society, a nonprofit organization. All rights reserved.

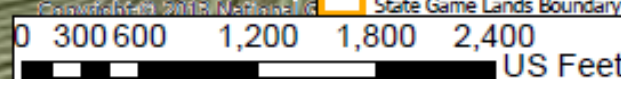
Hickory Hill Herbicide Map
Mile-a-minute and Fern treatment
SGL 321, Clinton County
117 acres



Herbicide Block

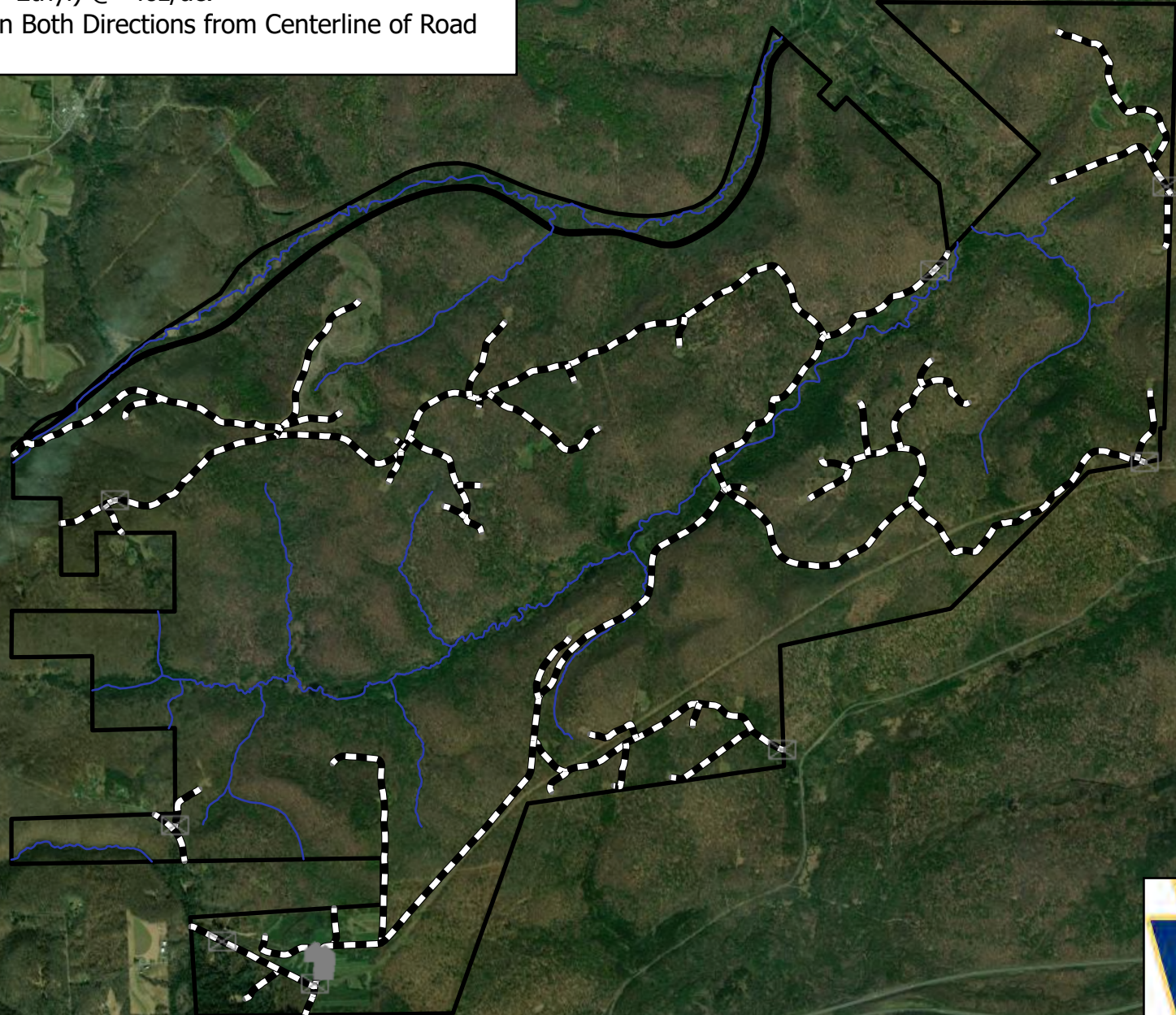
Block

- Island
- Spray Block
- Roads on Game Lands
- State Game Lands Boundary



**SGL 331 Roadside Japanese Stiltgrass
Herbicide Treatment (158 ac.)**

Assure II (Quizalofop P-Ethyl) @ 4oz/ac.
Treatment Area is 40' in Both Directions from Centerline of Road



Legend

- Treatment Area
- SGL 331 Roads
- Stream
- SGL 331 Boundary
- Gate
- Building_Point

